

Iceberg

Icy design

DESIGN

Marco Pucci - Claudio Dondoli, 2011

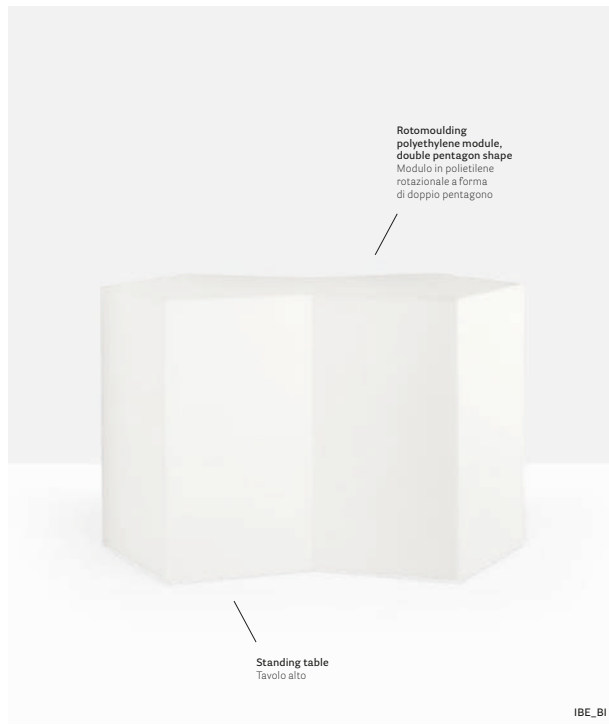
EN – Shaped like a block of ice, this modular bar counter is the heart of a convivial environment like a bar by a pool, a beach or a garden. Made in high-density roto-molded polyethylene, the modules of the Iceberg can be combined to create highly suggestive luminous compositions.

IT – Un banco bar modulare che assume la forma di un blocco di ghiaccio diventa il fulcro di aggregazione in contesti conviviali quali bar all'aperto a bordo piscina, in spiaggia o in giardino. Realizzati in polietilene ad alta densità stampati in rotomoulding, i moduli di Iceberg sono atti a dare vita a composizioni luminose di grande suggestione.



Bar counter

Bancone bar



Temporary installation

Brescia, Italy

Project: Temporary installation

Products: Iceberg bar counter,
Rubik barstool





Temporary installation

Brescia, Italy

Project: Temporary installation

Product: Iceberg bar counter,
Rubik barstool, Ara side chair,
Ypsilon table

SIZES / DIMENSIONI

IBE_BI

Linear module in polyethylene



IBE_SUP_MET_BI

Upper top only 1585x785



IBE_INF__BI

Lower tops only 2x(600x280)



IBE_LUCE

Lighting kit only,
2 LED lights bulbs included: 13W, 6500K



electrical features

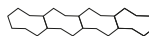
caratteristiche elettriche

- Light IBE_LUCE: MAX 2x23W FBT E27 220-240V 50/60Hz Cl.1 IP44

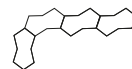


EXAMPLES OF COMBINATIONS / ESEMPLI DI CONFIGURAZIONI

Linear / Lineare



Corner / Angolare



Circular / Circolare



FINISHES / FINITURE

polyethylene / polietilene



methacrylate / metacrilato



powder coated / verniciato



BI



BI



BI100E

CERTIFICATES / CERTIFICAZIONI

IBE_LUCE
IEC 60598-2-4:2017 used in conjunction with IEC 60598-1:2014, AMD1:2017
EN 60598-2-4:2018 used in conjunction with EN 60598-1:2015 + A1:2018 (Test Report N° 0009CE18)
IEC 60598-2-4:2017 usato in conformità con IEC 60598-1:2014, AMD1:2017
EN 60598-2-4:2018 usato in conformità con EN 60598-1:2015 + A1:2018 (Test Report N° 0009CE18)

